



Company Profile



Services



Clientele



Projects

COMMERCIAL INTERIOR DESIGNERS



World Class Interior Design Solutions



Beautiful, Modern Work Spaces



Transform your office environment to a functional work of art

Collaboration our **secret sauce**. We turn ideas into a collective vision which, when combined with an inspired team, results in truly **transformational spaces**. In every project, we aim to exceed expectations and we love to share in your success. We listen, seek to understand and immerse ourselves in your business and the challenges you face now and as you grow. We engage, inspire and enable **your vision**.



corporate

Corporate Statement 3 	Our Services 4/5 
Selected Clientele 6/7 	Selected Portfolio 8-55 
Team Building 56 	Corporate Information 56-62 



Mission

To be the preferred interior design company within our regional borders by providing creative, effective and affordable services in all constitute areas of design and interior construction.

Vision

To our clients: To engage with our clients and exceed their expectations by providing them with design 40's pre-eminent services in design, construction and after-sales maintenance.

To our employees: To make Design Forty the employer of choice by offering employees a dynamic and challenging work environment which fosters personal and professional growth.

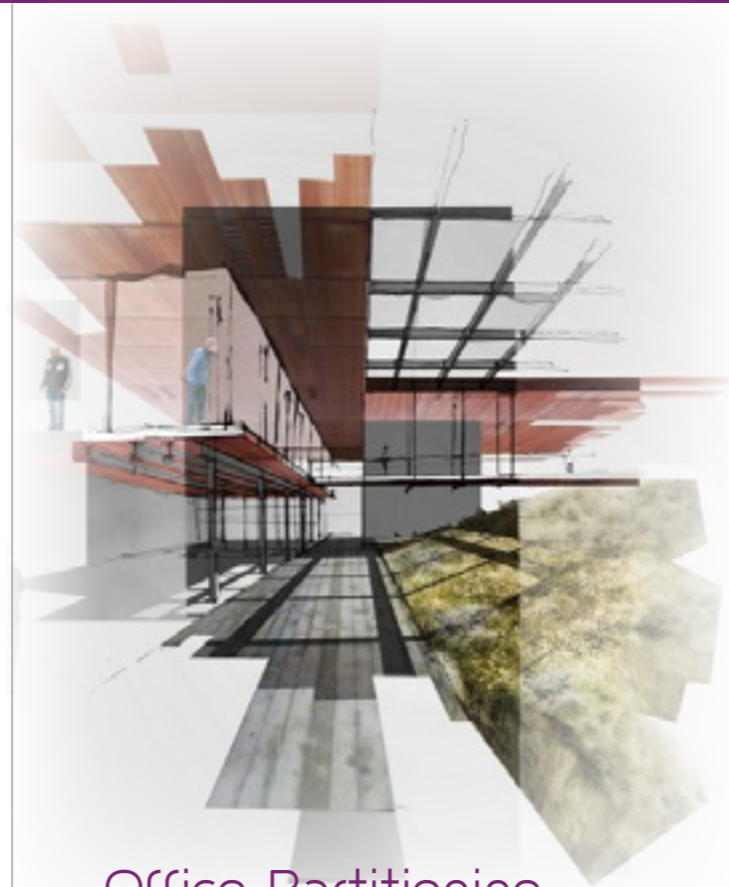
To our community: To work with the community within which we operate in areas of improving their lives through leadership-driven corporate social responsibility charter.

To our stakeholders: To deliver consistent value addition to our stakeholders.



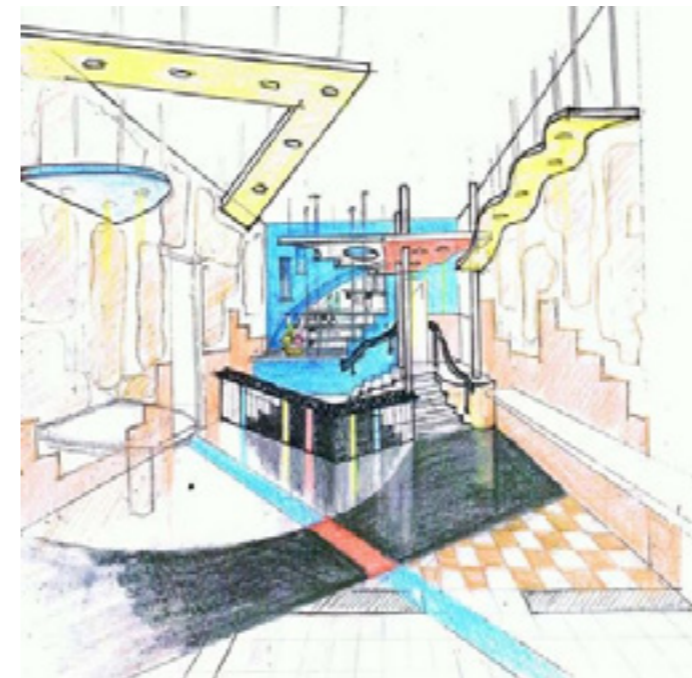
Design

Our experienced designers develop concepts based on special project functionality with client's expected outcome. **Special interest is given to form and function.** We provide design solutions that bring out functionality, aesthetics and address your unique needs.



Office Partitioning

We specialize on commercial and corporate office designs for large and small scale organizations using aluminium and glass partitioning for walls, carpets or tiles for floors, window blinds for windows, gypsum bulk heads for ceilings and LED lighting using our own Lumina lights.

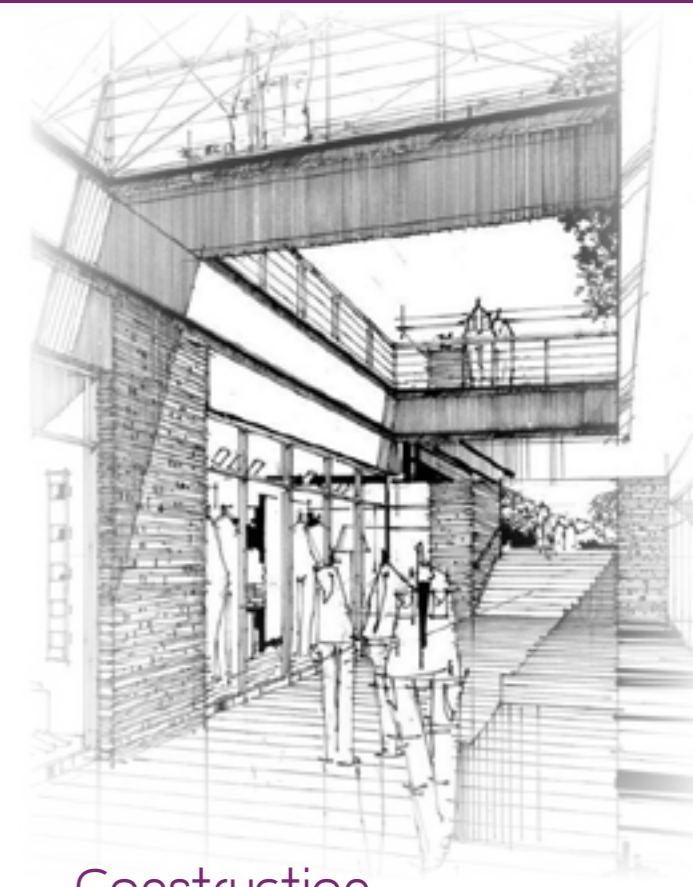


Project Management

We advise our clients on the suitable materials to be used in respect to cost and undertake certain precaution to ensure that the designs agreed upon are fully implemented.

Furniture

We work with leading manufacturers to offer quality products with an extensive range of styles and finishes together with installation services. We source and supply pre-fabricated and custom-made furniture systems in different modes. Executive furniture, modular systems, movable furniture as well as reception counters.



Construction

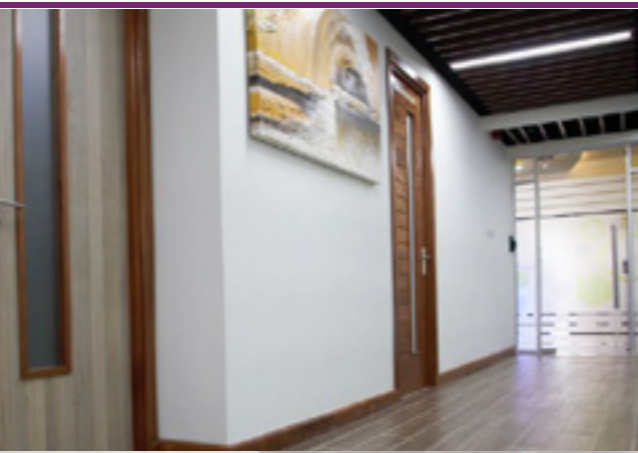
We have well-trained artisans and a fully equipped production workshop. We do execute a wide range of interior design projects such as partitioning, flooring, lighting & electrical, window treatment, ceiling effects, wall finishing effects, plumbing, and soft furnishings among others.

Interior Architecture

Our design team will work alongside you to develop several ideas and suggestions, using the latest Computer Aided Design (CAD) tools and 3D technology to conceptualize your ideas to life.

Over the past 10 years, Design 40 has provided World Class Interior design solutions to multinational manufacturing companies, financial institutions, international NGOs, academic and training institutions as well as the government. In the following pages, we are proud to present our pictorial portfolio for some of our recent clientele.

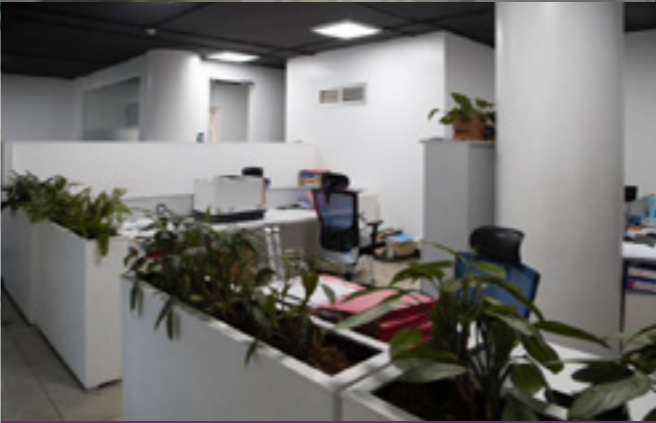




CDSC (Central Depository & Settlement Corporation) is the quality provider of clearing and settlement services in the Kenya Capital Markets. It offers secure central custody and simplified, swift and safe transfer of investors' value.

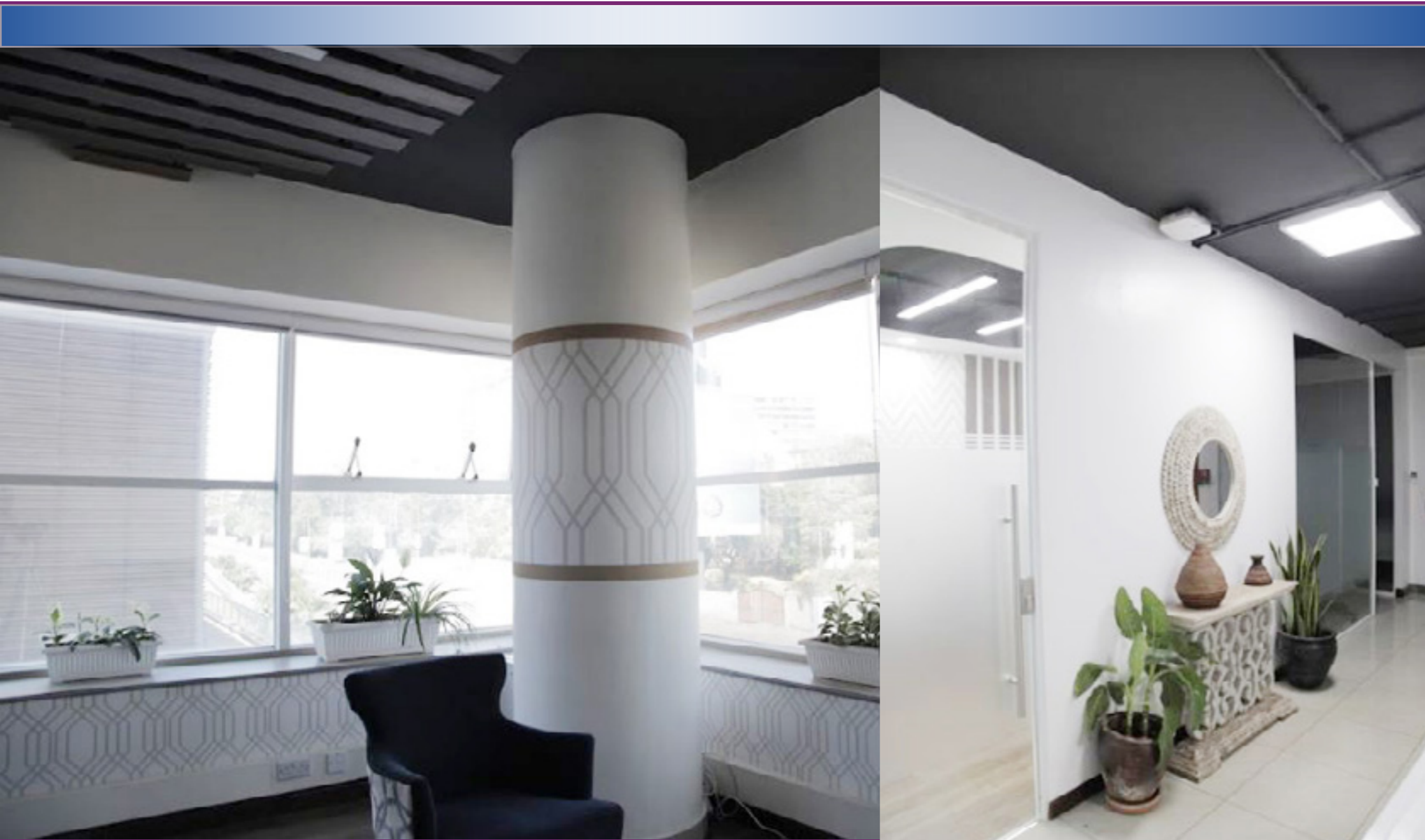
Design 40 Ltd. has redone the entire CDSC interior design corporate offices fit outs on 10th and 11th floors at Europa Towers, Nairobi. Work included concept development, flooring, partitioning, ceiling, lighting, And branding.





Takaful Insurance of Africa Ltd (TIA), is a pioneering and dynamic Takaful company which has introduced a new and exciting ethical perspective to risk management in the Kenyan market.

In line with their Vision, the company contracted Design 40 Ltd to re do and re brand the entire interior space at its head office at Renaissance House, Upper Hill Nairobi. The work was done to perfection on a record time.

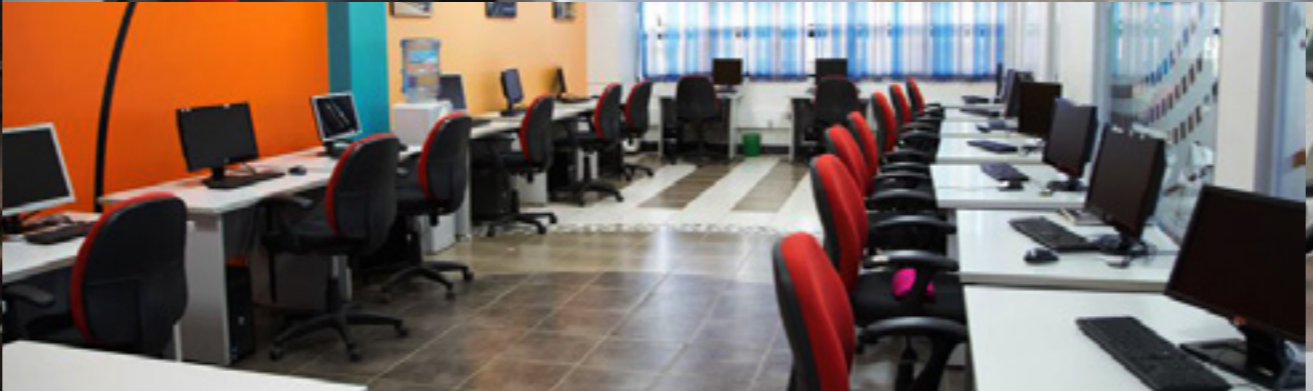




Ipsos is the leading market information and research agency in sub-Saharan Africa. It is Global leader in market research and delivers reliable information and true understanding of Society, Markets and People in private, NGO and public sectors locally and across the African continent.



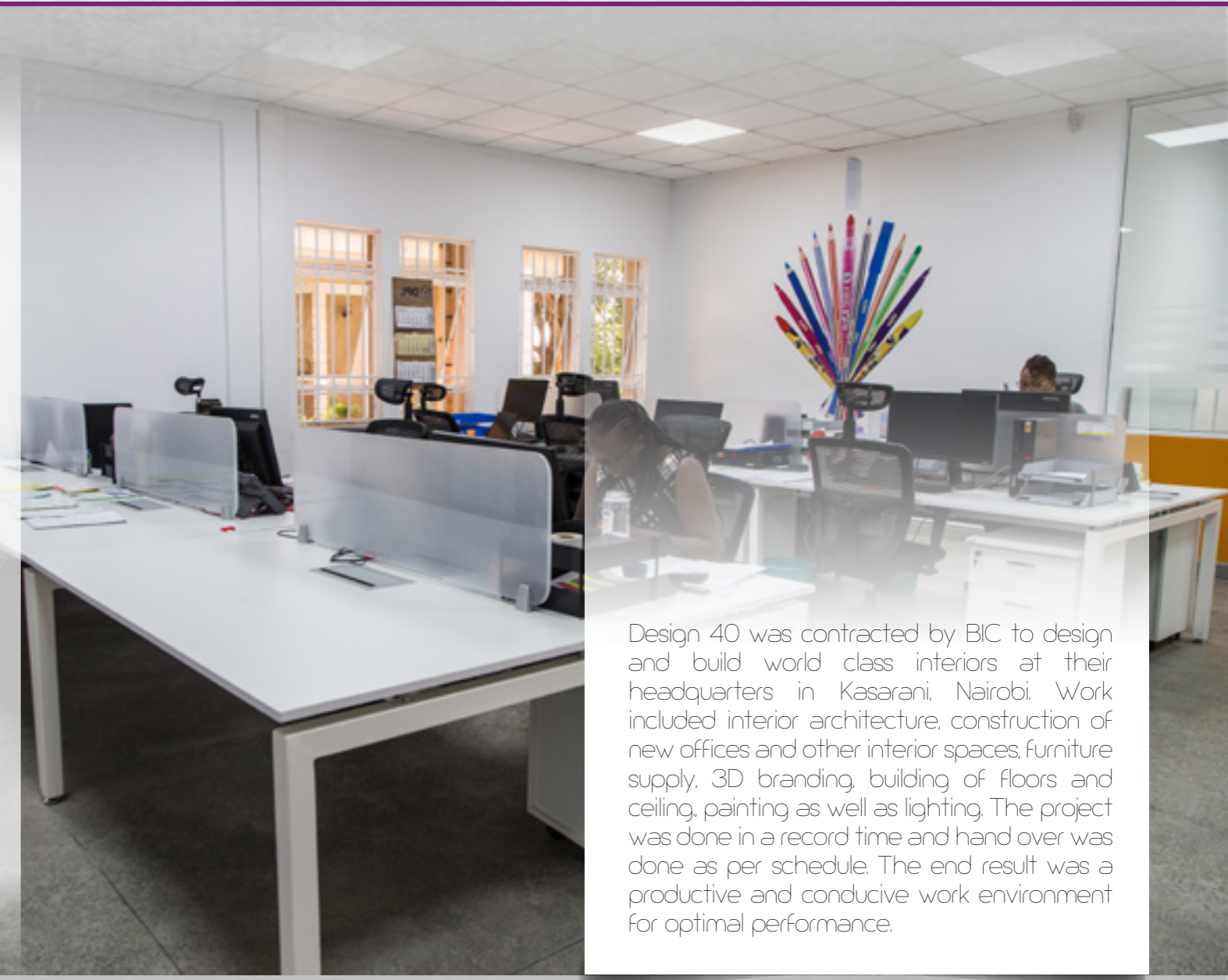
To portray the image of a global leader in research, **IPSOS** hired the services of Design 40 Ltd. to refurbish and fit out their head office interiors at Acorn House, Parklands/Highridge, Nairobi. Among the key areas of work undertaken included general corporate outlook in flooring, ceiling and bulk heads, lighting, open and break away areas, reception counters and other related tasks.







BIC is a family-owned company listed on the Paris Stock Exchange and a world leader in stationery, lighters and shavers. For more than 60 years, BIC has honored the tradition of providing high-quality, simple, inventive and reliable choices for everyone, everywhere, every time



Design 40 was contracted by BIC to design and build world class interiors at their headquarters in Kasarani, Nairobi. Work included interior architecture, construction of new offices and other interior spaces, furniture supply, 3D branding, building of floors and ceiling, painting as well as lighting. The project was done in a record time and hand over was done as per schedule. The end result was a productive and conducive work environment for optimal performance.





Pernod Ricard Kenya is the second largest player in the Premium Spirits and Champagne category.



At its regional Headquarters at 14 Riverside Drive, Nairobi, Design 40 was recently contracted to design and build office interiors, and display counters. Other works included painting and branding, flooring, ceiling design and lighting





Automobile Association Kenya is the largest Automobile Association in Kenya with over 100,000 members and branch offices in all major towns countrywide.

Design 40 was fully involved in the interior architecture and building of their new offices at Renaissance plaza, Upper Hill and Hurlingham Business Centre branch in Nairobi. Beautiful functional and bespoke work places were created including branding and external 3D signages for all the 3 affiliate companies. They were re branding as part of their centenary celebrations.



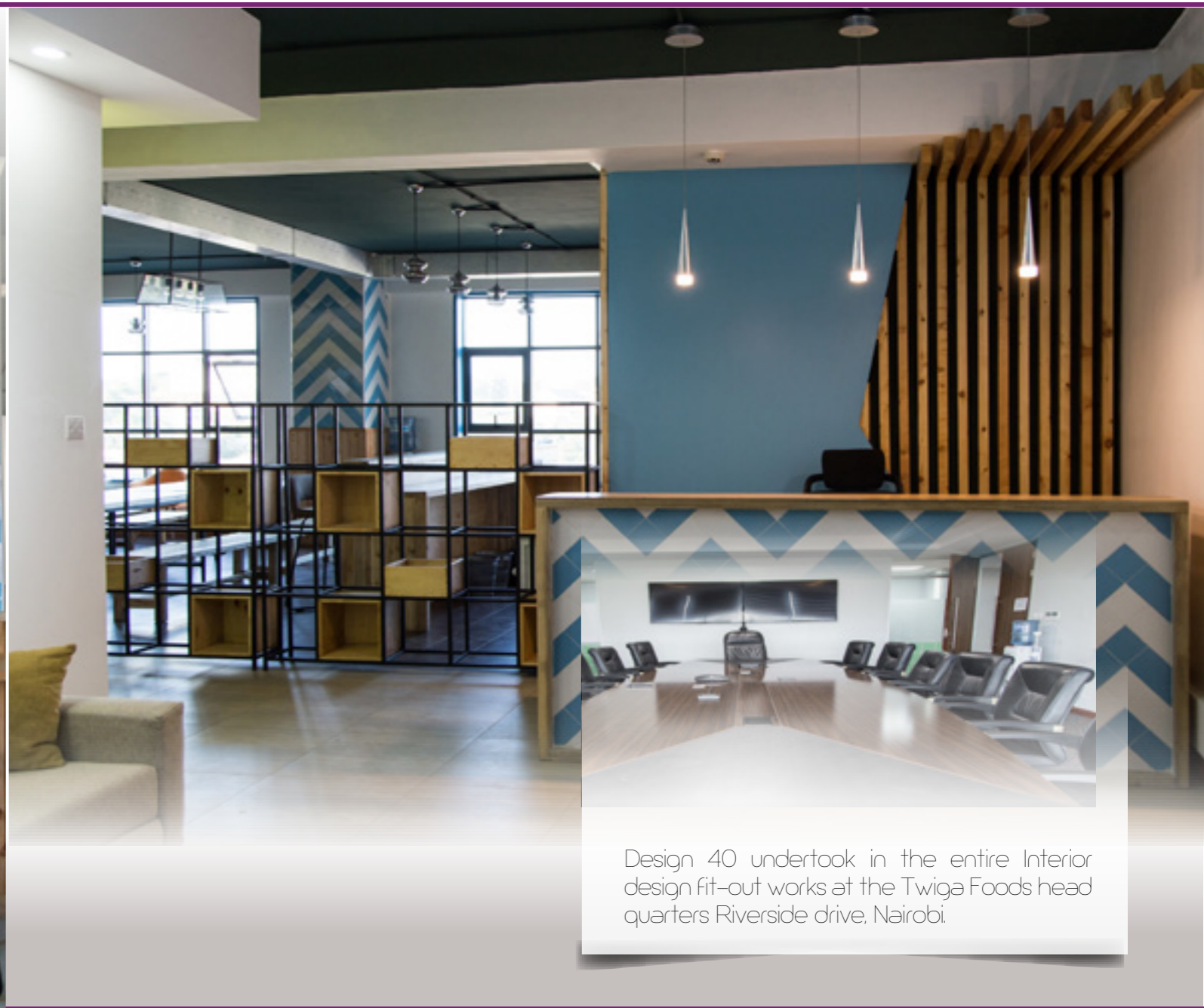
UAP Old Mutual Limited (OML) is a premium African financial services group that offers a broad spectrum of financial solutions to retail and corporate customers across key markets in 17 countries.



Design 40 Ltd. was the lead contractor in the fit out of UAP-Old Mutual head office in Kenya. The work involved partitions, flooring, electrical and IT works as well as mechanical. The client was time constrained but Design 40 was able to pull off the project of 6 floors (30,000 Square Feet) within 4 months.



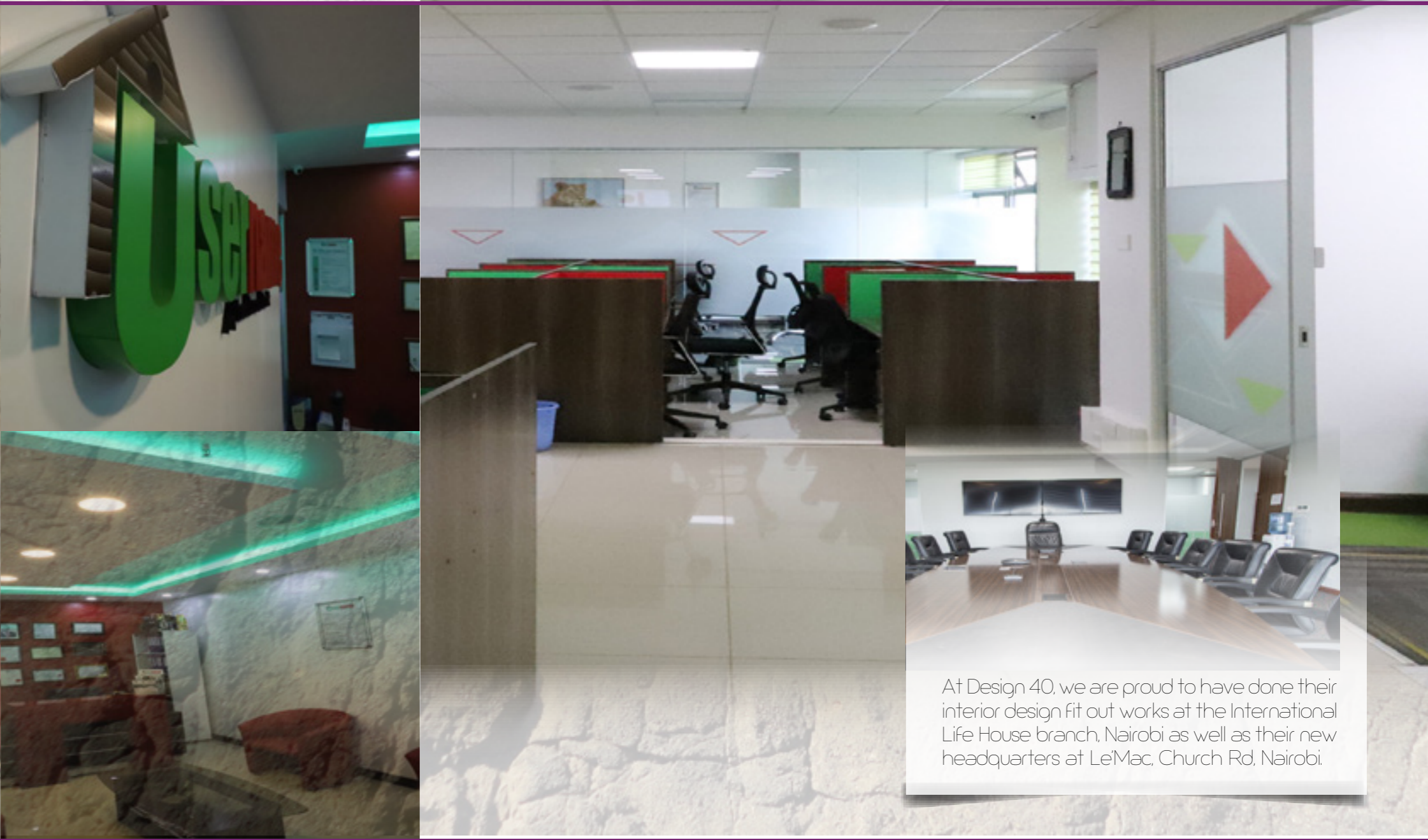
Since 2014, Twiga has been bridging gaps in food and market security through an organized platform for an efficient, fair, transparent and formal market place.



Design 40 undertook in the entire Interior design fit-out works at the Twiga Foods head quarters Riverside drive, Nairobi.



Username Investment Limited is a leading real-estate development and Investment Company based in Kenya.



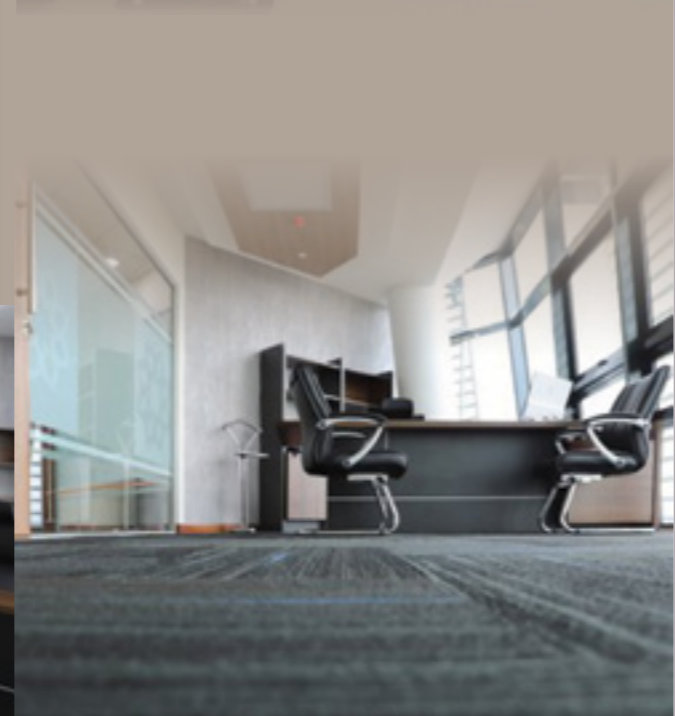
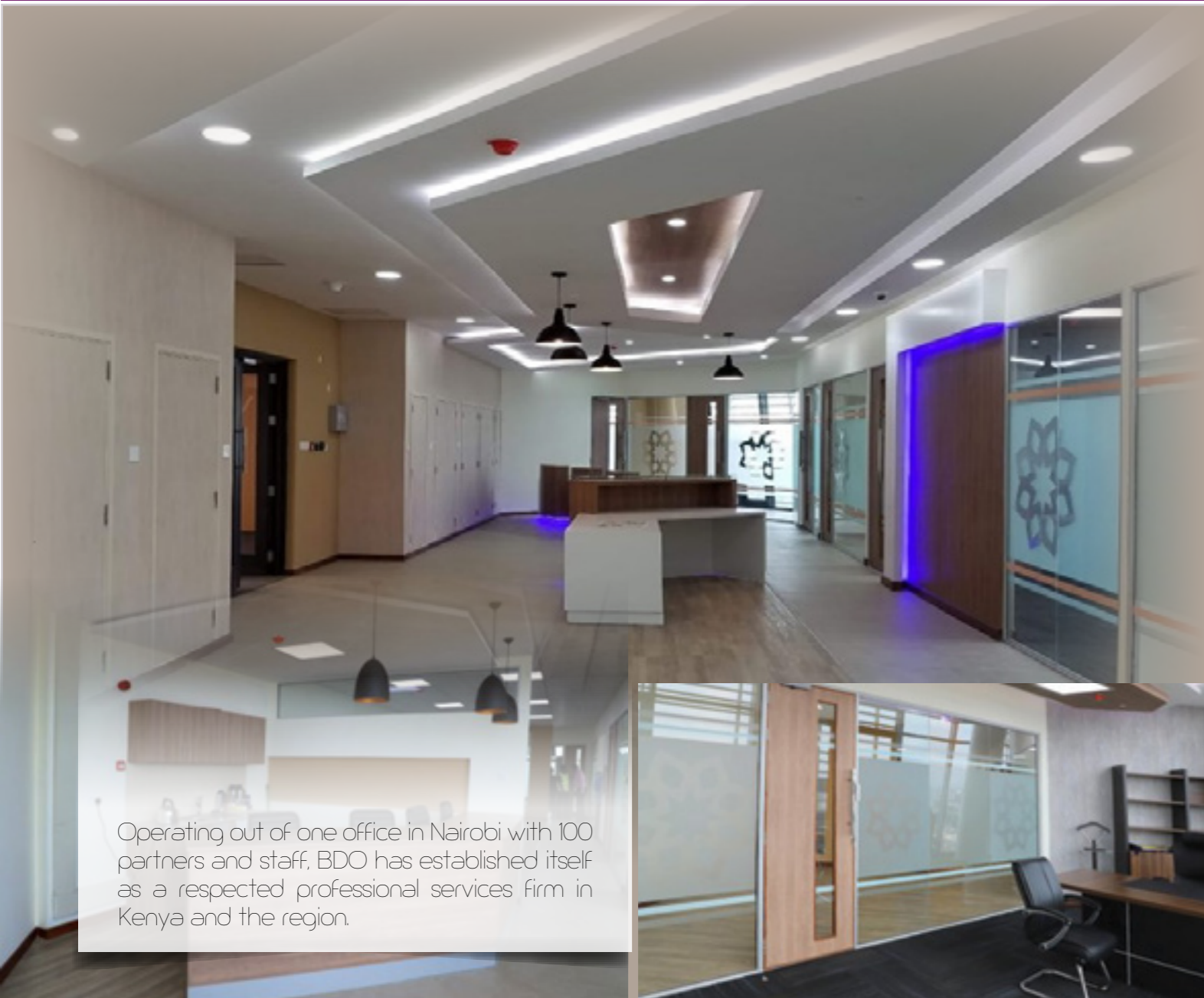
At Design 40, we are proud to have done their interior design fit out works at the International Life House branch, Nairobi as well as their new headquarters at Le'Mac, Church Rd, Nairobi.



BIDCORO Africa Ltd is a partnership between BIDCO Africa Ltd. and CORO A/S based in Denmark, formed to develop and deliver products specifically to suit the needs of the East African consumer.



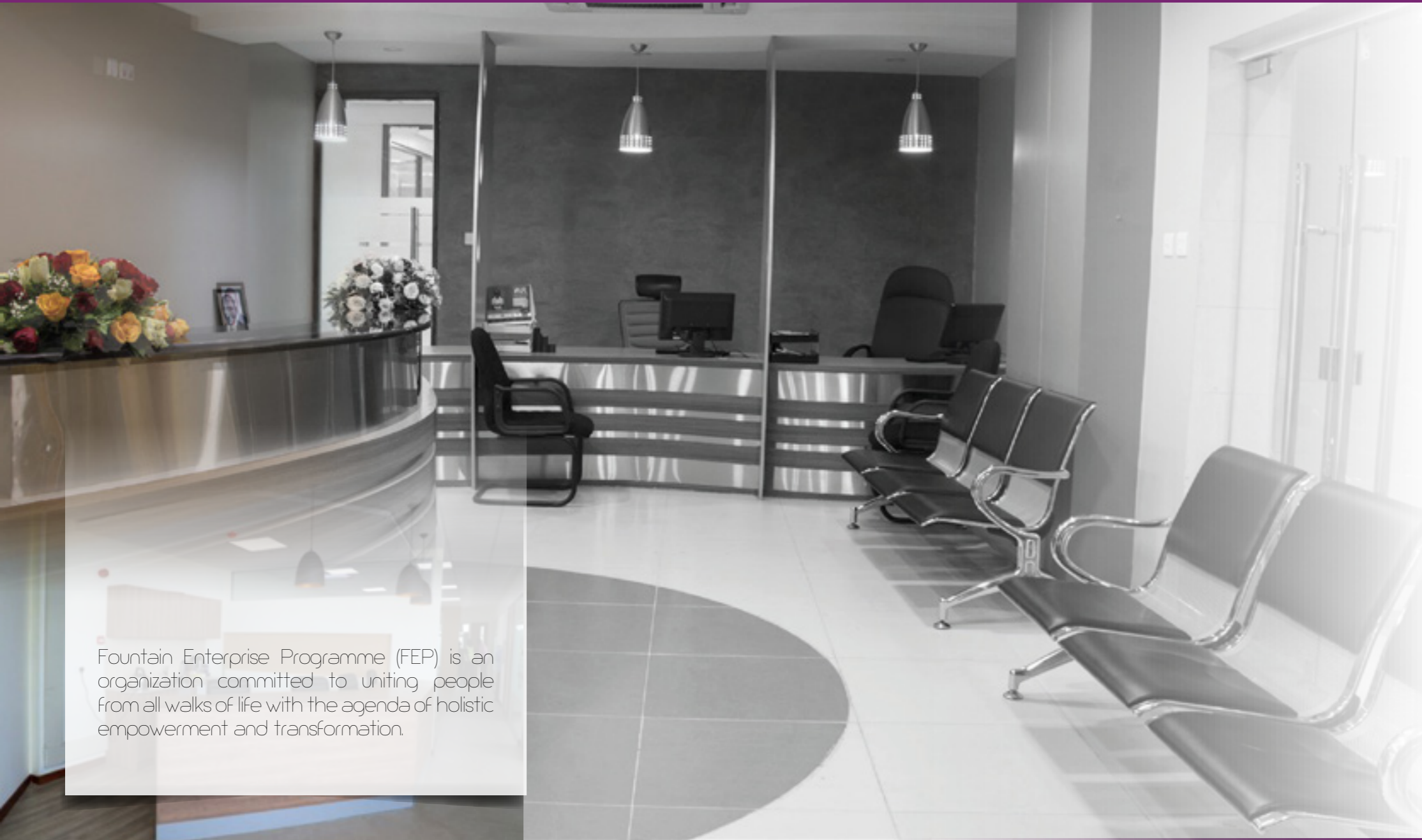
In order to achieve a creative and productive work environment, Design 40 was contracted by the company to design and build creative modern office interiors at the BIDCORO headquarters, at Tatu Industrial park.



Operating out of one office in Nairobi with 100 partners and staff, BDO has established itself as a respected professional services firm in Kenya and the region.



Interior fit out works here included aluminium and glass partitions, design and building of reception counters, branding, Painting and electrical works at Sameer Industrial Park, Mombasa Road- Nairobi.



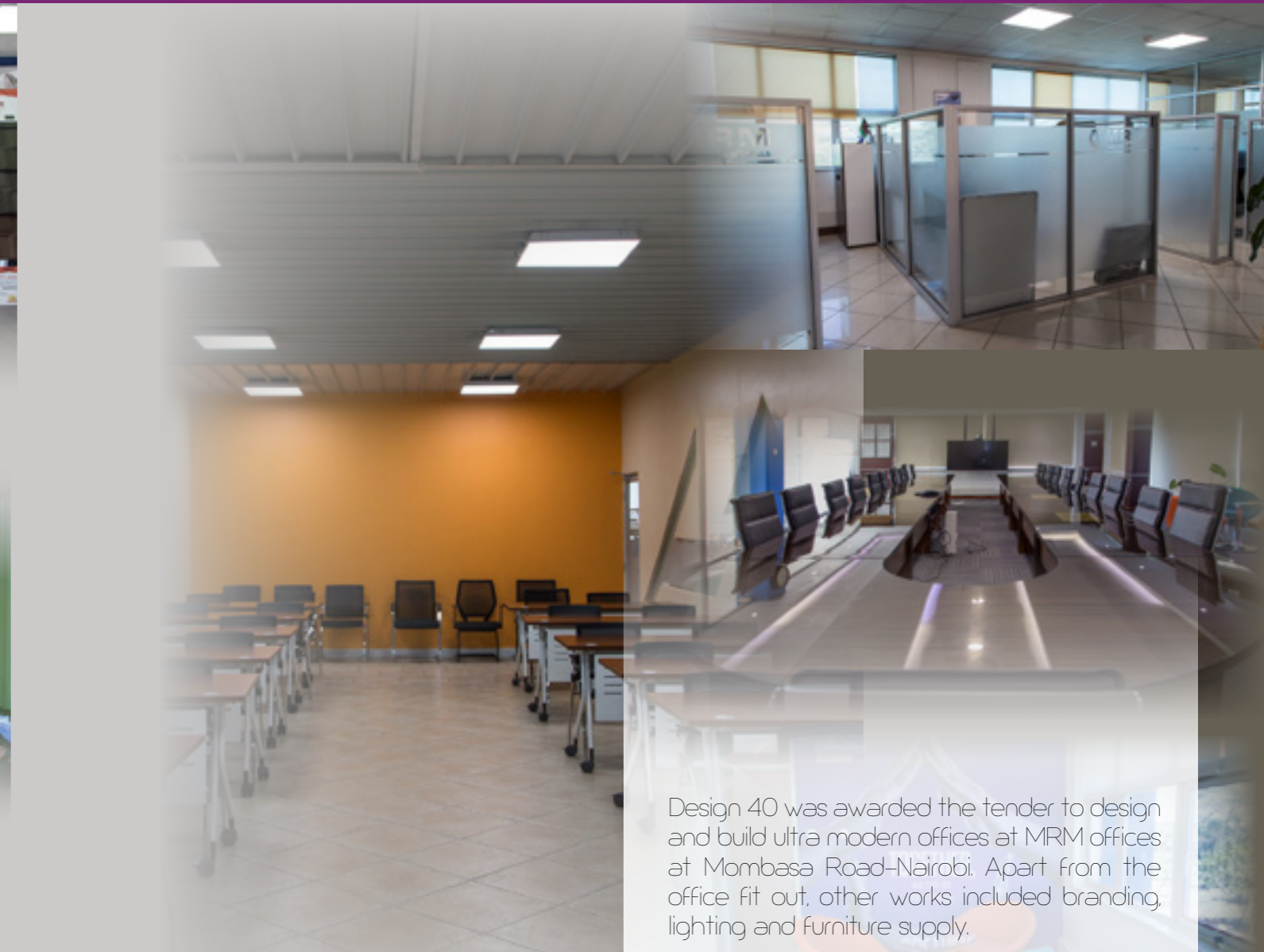
Fountain Enterprise Programme (FEP) is an organization committed to uniting people from all walks of life with the agenda of holistic empowerment and transformation.



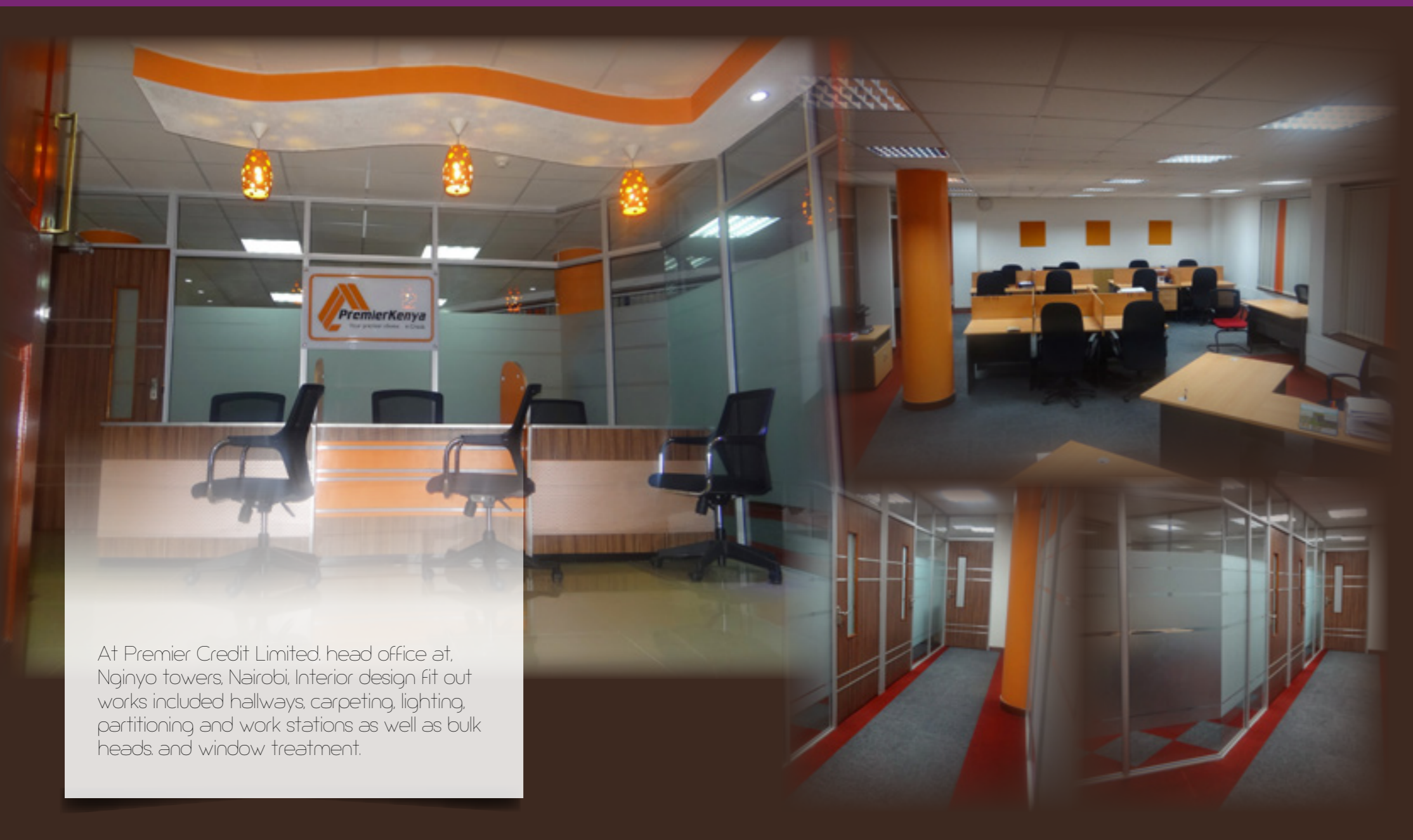
In order to achieve this transformation, work places had to be created at the Galana Road headquarters in Nairobi. Design 40 was given the overall mandate to design, create and build offices and work stations, supply furniture and carpets, paint, do tiling and undertake in all the electrical works in the entire premises.



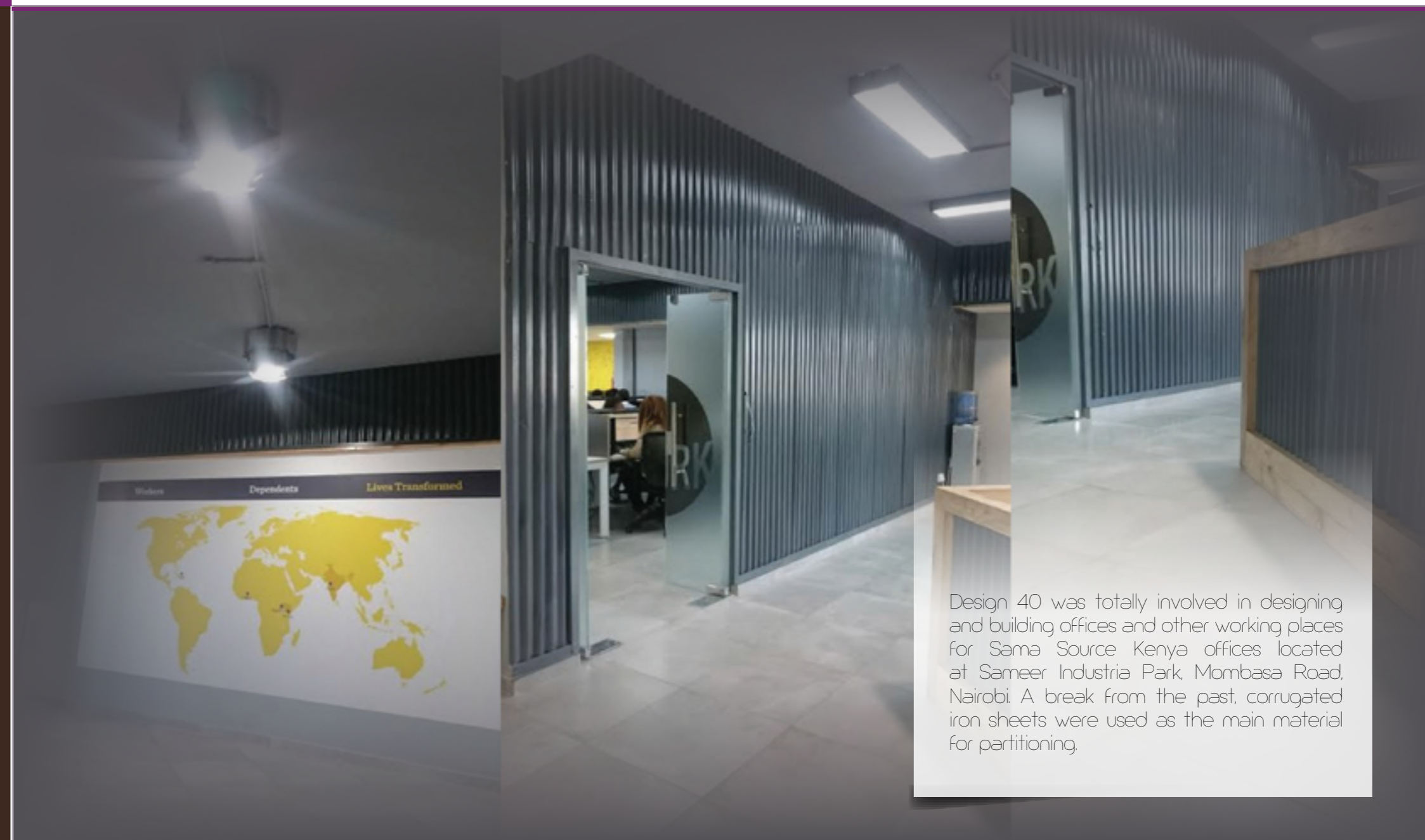
Mabati Rolling Mills Limited (MRM) is the largest company within the Safal Group. It is Africa's largest producer of steel roofing. The company has over 36 metal coating and roll forming operations across Eastern, Central and Southern Africa.



Design 40 was awarded the tender to design and build ultra modern offices at MRM offices at Mombasa Road-Nairobi. Apart from the office fit out, other works included branding, lighting and furniture supply.



At Premier Credit Limited: head office at, Nginyo towers, Nairobi, Interior design fit out works included hallways, carpeting, lighting, partitioning and work stations as well as bulk heads and window treatment.



Design 40 was totally involved in designing and building offices and other working places for Sama Source Kenya offices located at Sameer Industria Park, Mombasa Road, Nairobi. A break from the past, corrugated iron sheets were used as the main material for partitioning.



COMPLETED EXTERIORS

Since 2002, Simlaw Seeds Company continues to play a major role in the agricultural sector in the East Africa region. The company signifies a strong heritage of seed diversity.

We were recently contracted by the esteemed establishment to undertake in the renovations works their Nairobi premises in Conjunction with engineers and architects, we successfully completed the project in good time. As depicted above, exterior branding, and painting was an excellent result.

BEFORE COMMENCEMENT

COMPLETED EXTERIORS



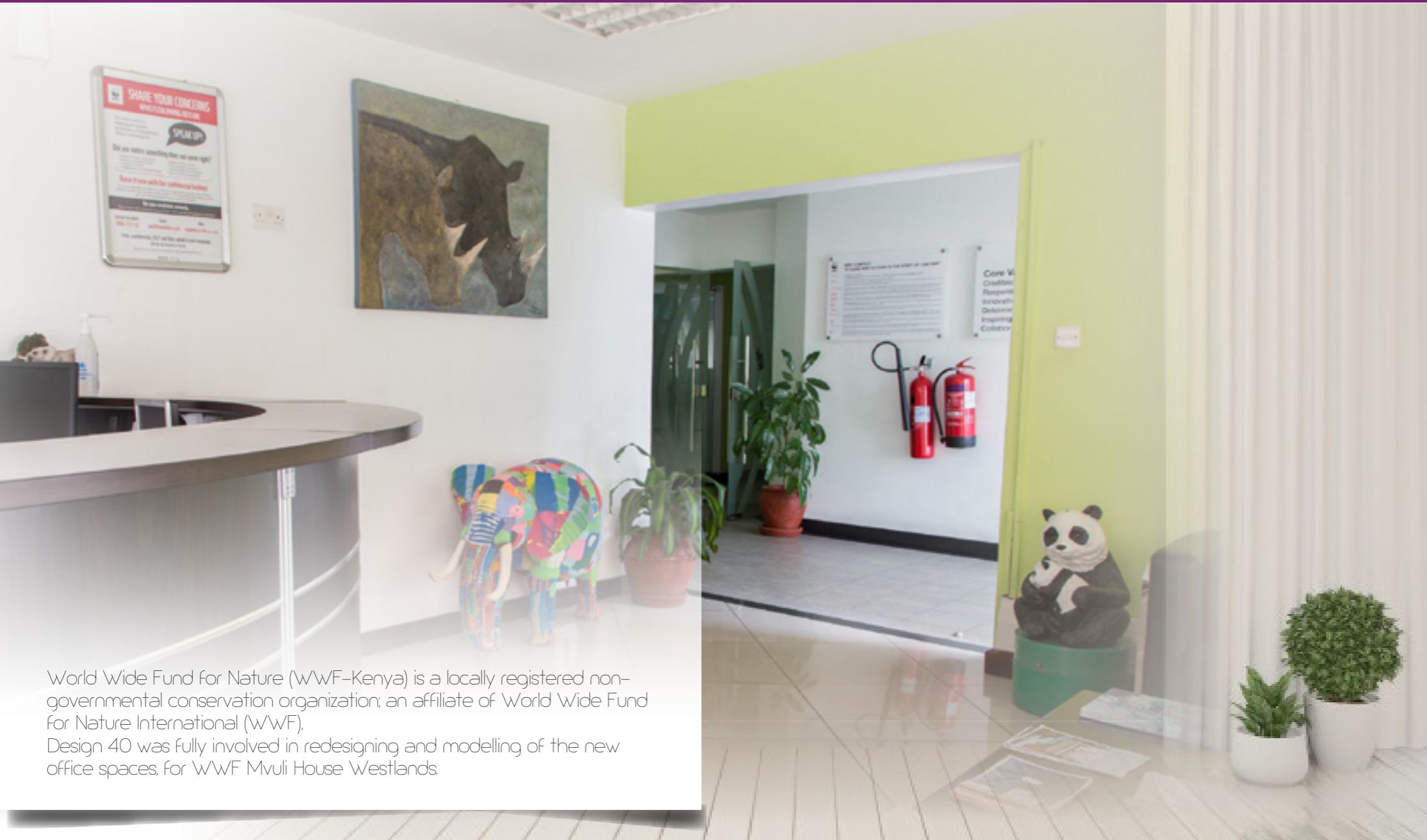
BEFORE COMMENCEMENT



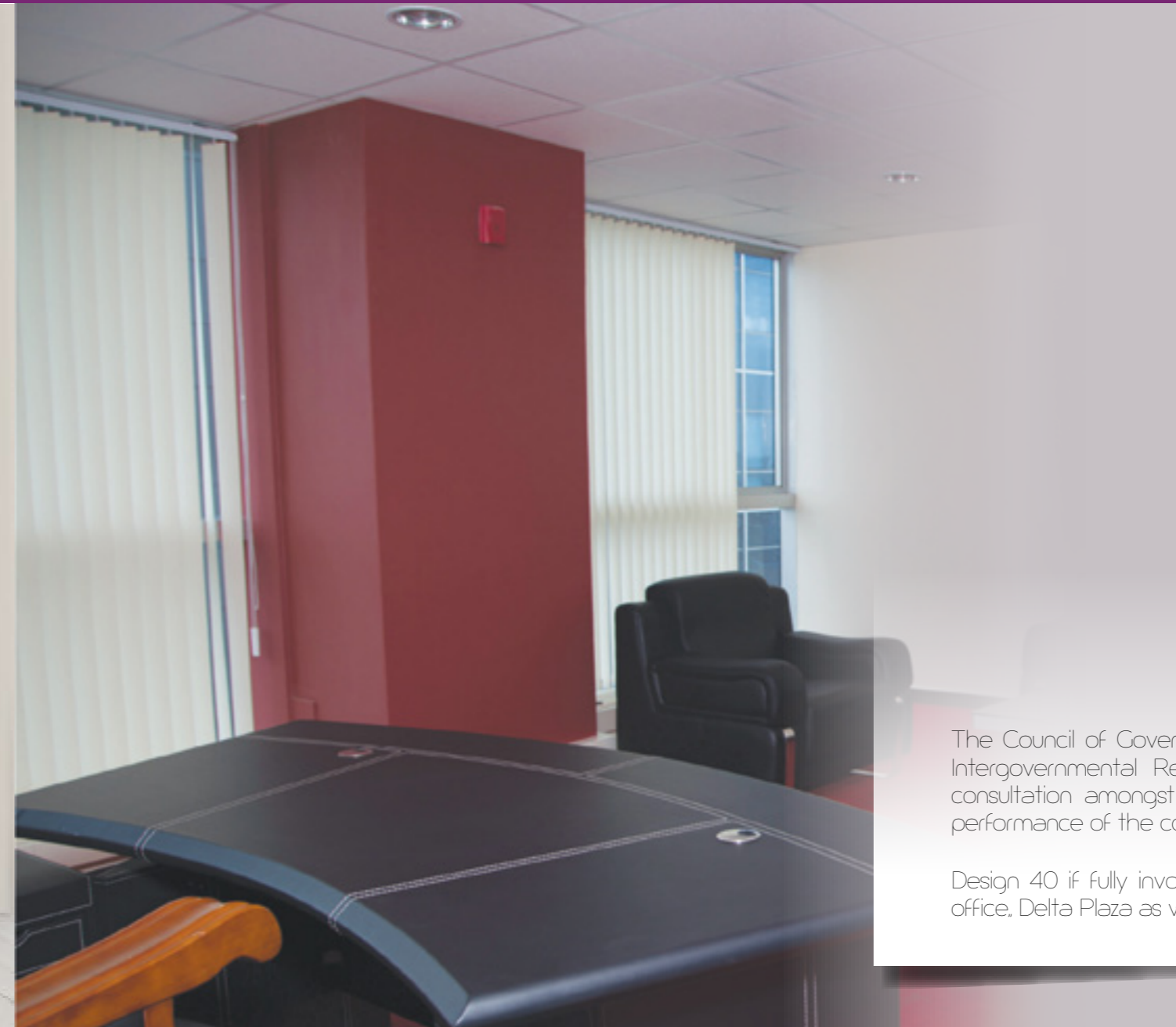
ON COMMENCEMENT



The Cooper Motor Corporation (CMC) is the fifth-largest importer of vehicles and fifth-largest car-assembly company in Kenya. Design 40 undertook in the renovation works at the Mombasa Branch to restore the torn out image. Specific areas included painting works, repair and masonry works and installation of glass panels on all windows.



World Wide Fund for Nature (WWF-Kenya) is a locally registered non-governmental conservation organization; an affiliate of World Wide Fund for Nature International (WWF). Design 40 was fully involved in redesigning and modelling of the new office spaces, for WWF Mvuli House Westlands.

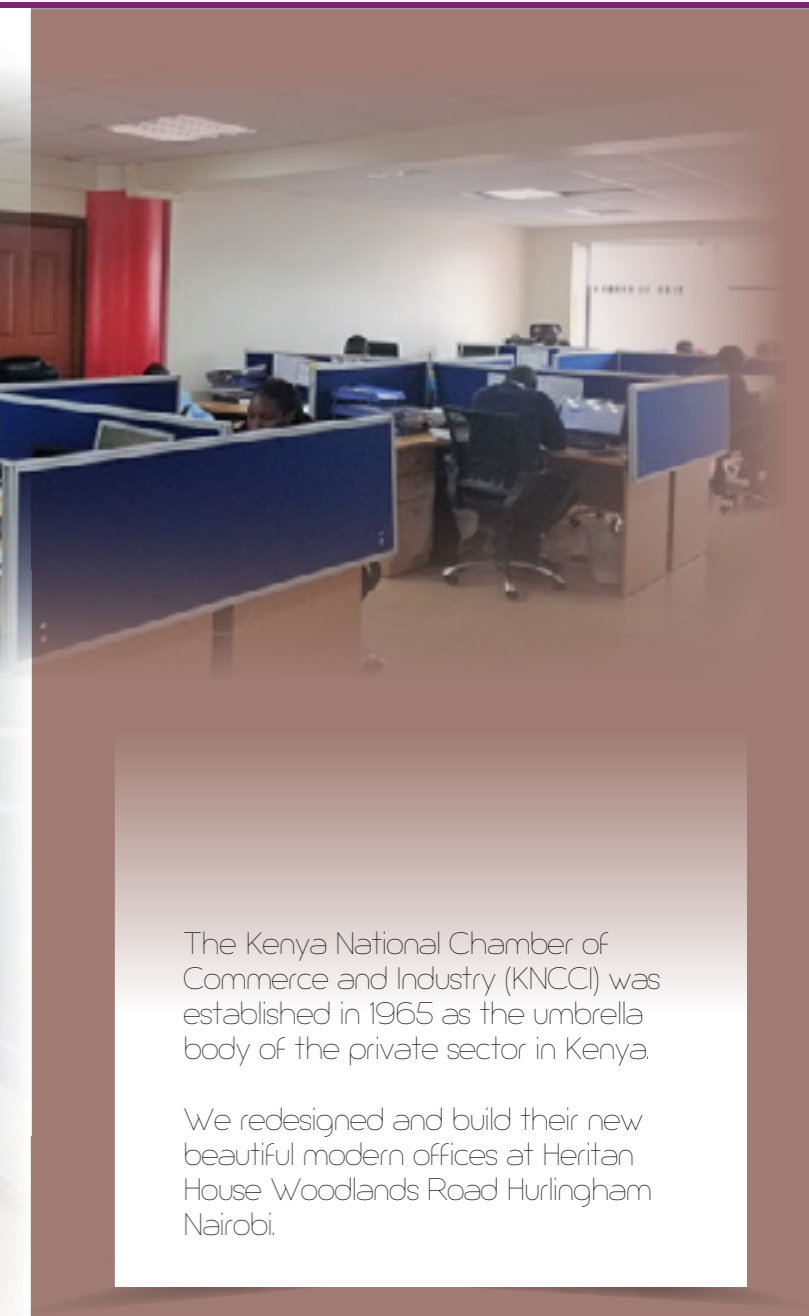


The Council of Governors (CoG) is established under Section 19 of the Intergovernmental Relations Act 2012 to provide a mechanism for consultation amongst County Governments and share information on performance of the counties in execution of their functions.

Design 40 is fully involved in interior design fit outs of secretariat head office, Delta Plaza as well as liaison offices countrywide.



Youth Enterprise Development Fund is a state corporation mandated to provide financial and business development support services to youth owned enterprises
At the Renaissance Plaza, Upper Hill Nairobi headquarters, Design 40 undertook in the design and construction of these ultra modern interior fit out works.



The Kenya National Chamber of Commerce and Industry (KNCCI) was established in 1965 as the umbrella body of the private sector in Kenya.

We redesigned and build their new beautiful modern offices at Heritan House Woodlands Road Hurlingham Nairobi.



Frontier Services Group Limited (FSG) offers world-class logistics solutions across the African continent. Design 40 carried out their office fit out works for the Nairobi office including flooring, ceiling, partitions and other interior design related projects at Riverside Drive, Nairobi.



Design 40 carried out Interior Design Fit out works at the Yara offices, Upperhill Nairobi



Cisco is the worldwide leader in IT, networking, and cyber security solutions. At the company offices, Landmark Plaza, Nairobi Design 40 was contracted to design and build world class offices as well as break areas. Flooring and ceiling works were also carried out.



CMA CGM is a French container transportation and shipping company. It is a leading worldwide shipping group.

Design 40 Ltd was awarded the tender to redesign and build the regional offices in Nairobi (Tulip House Mombasa road). From concept to design, work included flooring through partitions, working stations, furniture supply to 3D LED lighting and branding.



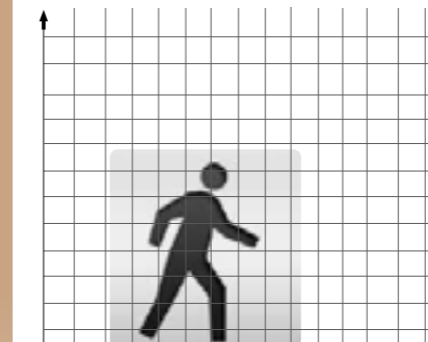
team building



Every year, design 40 plans and organizes staff motivation and training programs in different parts of the country. Thus, we provide our staff with excellent opportunities both to interact with each other, trainers and the locals from the places we visit.

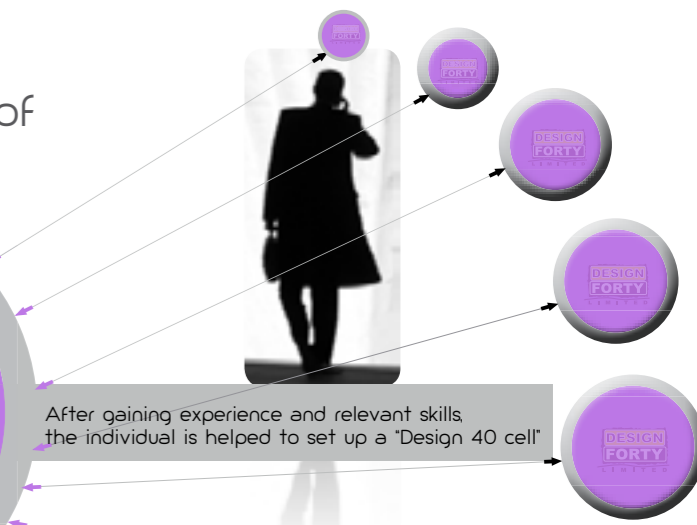
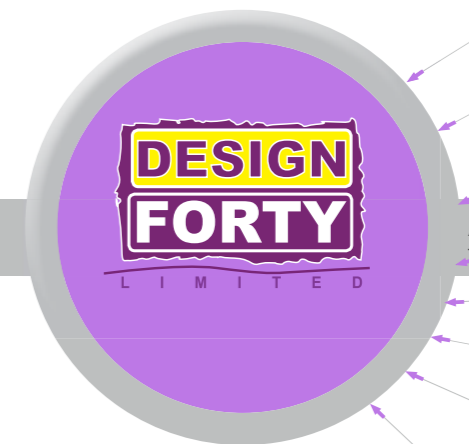


sustainability model



Young fresh graduates of Interior Design join the company as interns.

This is the future of Design 40



After gaining experience and relevant skills, the individual is helped to set up a "Design 40 cell"

After 6 months internship, the successful candidates get a 2-3 year contract.

1

Staff training

Design 40 offers training opportunities to interior designers either during internship and employment, lasting 2-3 years.

2

Entrepreneurship

We train our staff on entrepreneurship spirit. This empowers each individual with necessary skills and ethics to enable them operate professionally in their own autonomous cell but maintaining strong ties with Design 40.

3

The future

The autonomous cells will become the supportive structures of Design 40 upon reaching out more clientele, hence creating more employment.

Lighting

Our LED vs FLUORESCENT



UP TO **45**%

ENERGY SAVING



LUMINA is a product of Design 40 Ltd. These recessed or ceiling mounted high profile lighting products from Europe will save up to 45% power consumption.

Advantages

- Brighter light output
- No flicker
- Instant start up
- No UV
- Long life



green design

**DESIGN
FORTY**
LIMITED

Design 40 endeavors to offer eco friendly solutions while taking care of the environment by way of choice of materials as depicted.



We use processed materials made from recycling such as gypsum boards, particle boards, chip board etc. Use of glass ensures opening of spaces hence a lot of natural lighting and thus conserving energy.

Gypsum Bulkheads

Gypsum boards are used to build ceilings. They enhance decor, easy to work with and fire proof.

Eco friendly display boards

Aluminium Sections

We use aluminium sections to stand our partitions

Particle boards like chip-boards and glass are used to build reception counters/desks and work stations

Glass Partitions

Allows for more natural lighting hence conserving energy

OCCUPATIONAL HEALTH AND SAFETY POLICY



The Company recognizes its responsibilities under the Occupational Health and Safety Act 2007 and other relevant safety legislation with regards to its employees and others who may be affected. The Company also recognizes that Health and Safety should be considered equally with quality and performance when work is being considered or undertaken.

The Company will provide such information, training, supervision, plant and equipment as necessary, to identify, eliminate or control hazards and risks at the workplace. Adequate resources will be provided for this purpose. The overall objective is to achieve as far as reasonably possible a safe and healthy workplace for all. Any Company employee who supervises or manages the use of work equipment shall have received adequate training for the purposes

of health and safety, including training in the methods that may be adopted when using the work equipment, any risks that such use may entail and precautions to be taken.

All employees and sub contractors are expected to co-operate with the Company in carrying out this Policy and must ensure that their own work, so far as is reasonably practicable, is carried out without risk to themselves or others.

The management and staff of the company will monitor this Policy to encourage and strive for continual improvements in health and safety performance as an ongoing action.

To assist in this respect, the Company will appoint Safety Advisers to give advice on the requirements of the relevant statutory provisions and safety matters and, on request, to visit sites and workplaces to ensure compliance.

This Statement of Company Policy will be displayed prominently or made available at all sites and workplaces.

The policy will be reviewed on an annual basis to reflect any changes in legislation.

Signed: 
MANAGING DIRECTOR
Date:
J.M. NDEGWA
Managing Director

A Lasting Impression

Each project a unique story

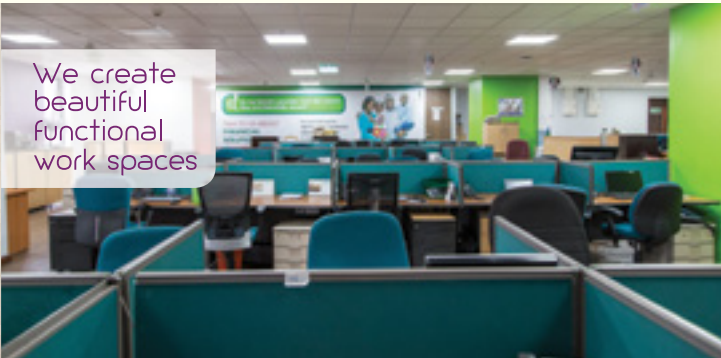
Driven by your vision, we aim to exceed expectations by tapping into innovative interior architecture and design. We create synergy that inspires and excites. We work hand in hand with you; We understand what you want your space to communicate to your clients and creatively conceptualise how we can achieve it with you every step of the way.



©2022 Design 40 Ltd. All rights reserved. Design 40 is constantly changing its designs, concepts and policies in line with the changing trends of design. No part of this publication will be reproduced, translated, stored in a retrieval system, or transmitted in any form or by any means, electronic, electrostatic, magnetic tape, mechanical, photocopying, recording or otherwise, without permission from Design 40.

Work has changed! Most offices have not.

WE SEE POSSIBILITIES



We create beautiful functional work spaces

RE THINK YOUR SPACE



Our professional services are backed by over 10 years of experience

A ONE STOP SHOP



With leading manufacturers, we offer an extensive range of office furniture



COMMERCIAL INTERIOR DESIGNERS

KENYA

DESIGN 40 LTD, LUNGA LUNGA SQUARE

P.O. Box 3189-00100 Nairobi Kenya

Tel: +254 722 370 297, 722 620 407

Email: design@design40.com Website: www.design40.com



TANZANIA

DESIGN 40 LTD,

LUTHERAN CHURCH KIJITONYAMA DAR ES SALAAM

Tel: +255-757-076703

Email: design@design40.com Website: www.design40.com